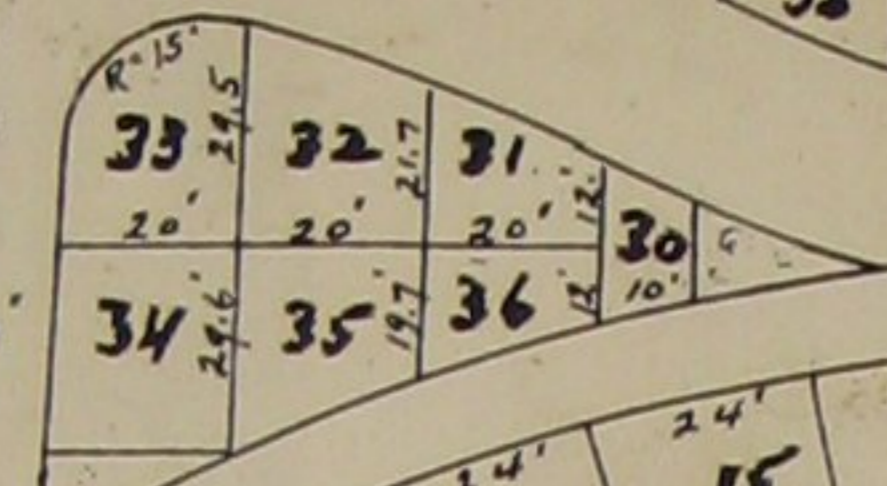
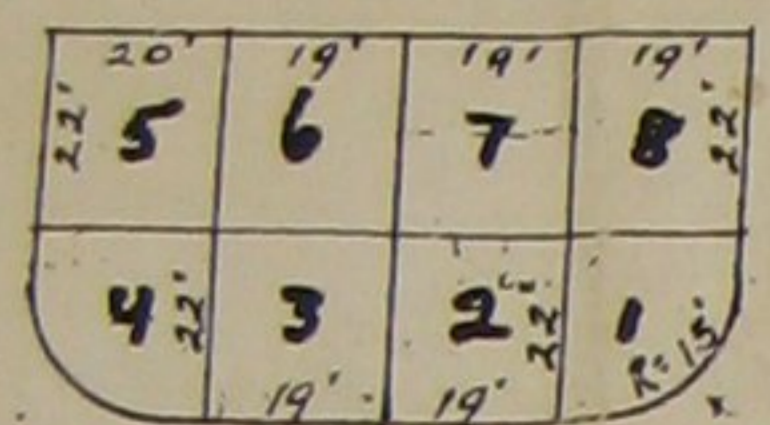
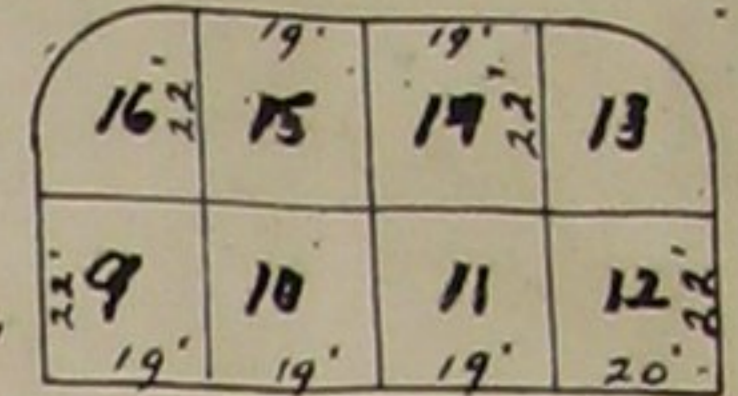
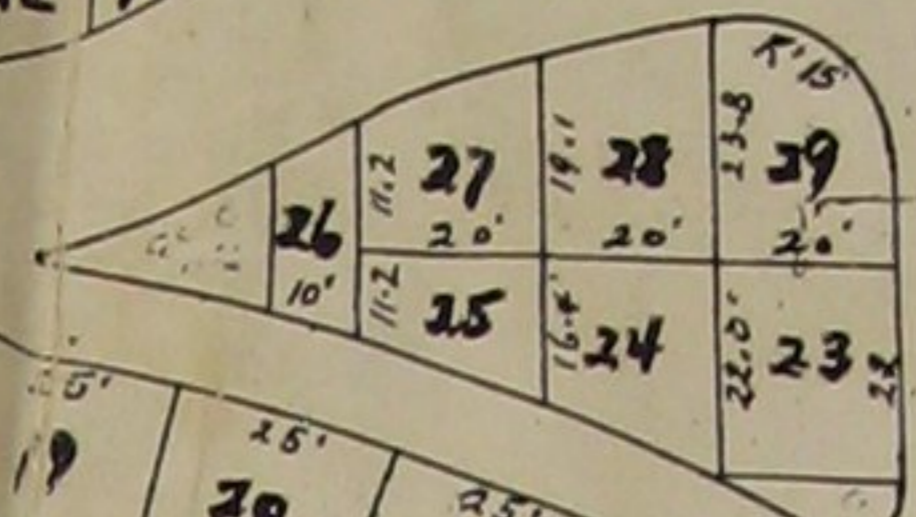
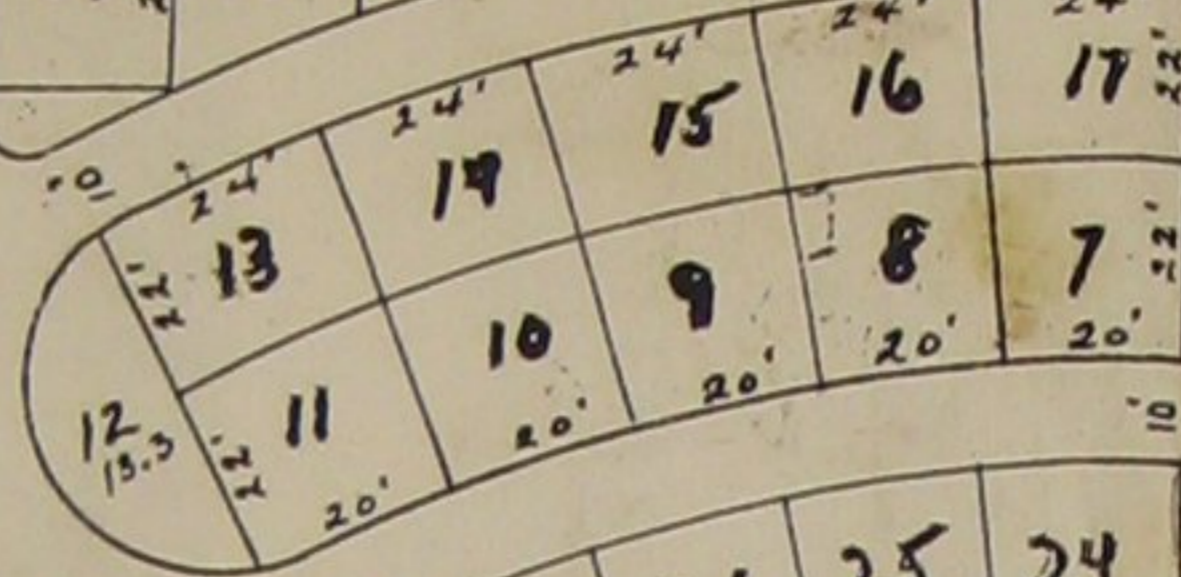


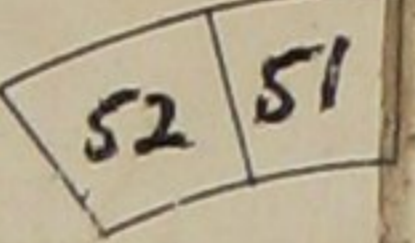
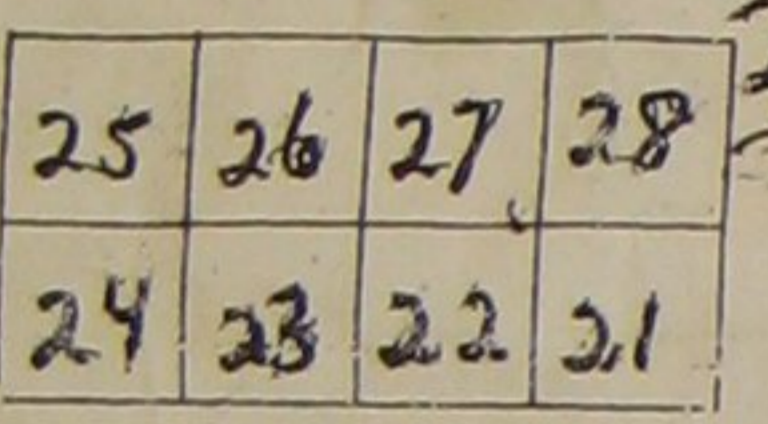
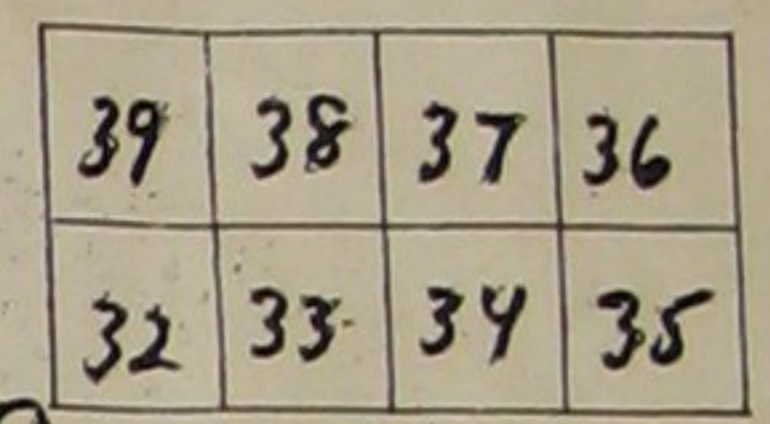
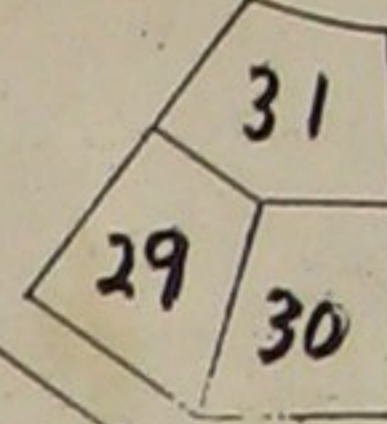
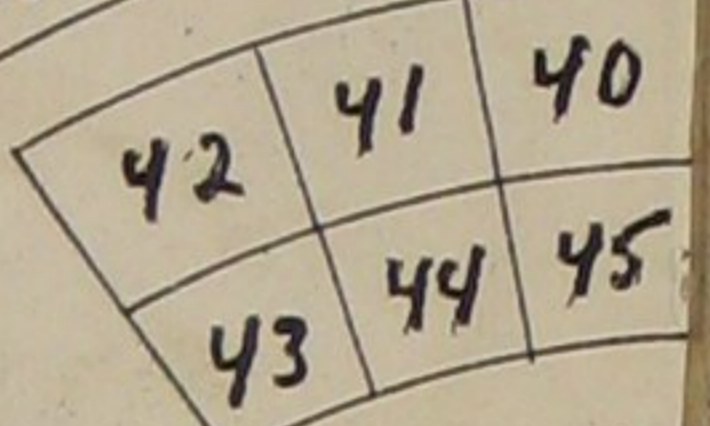
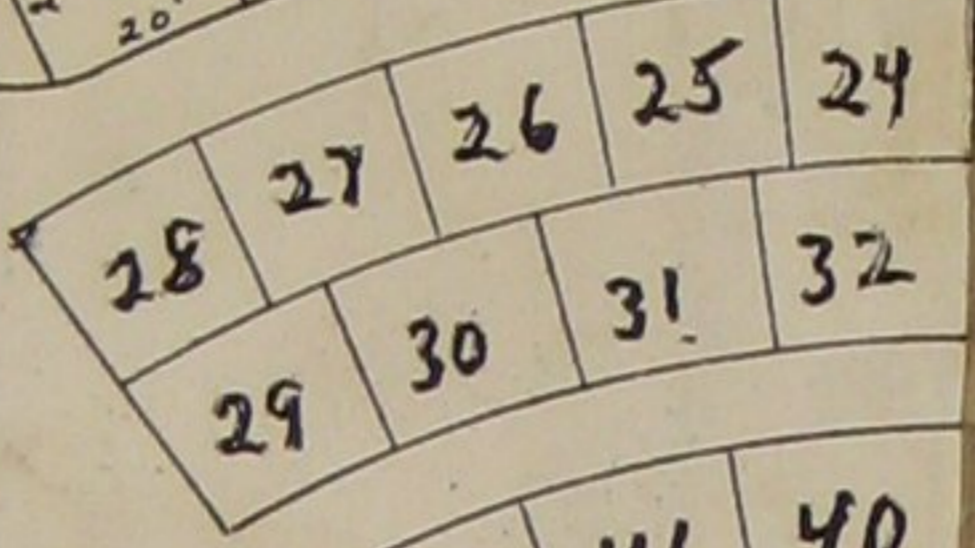
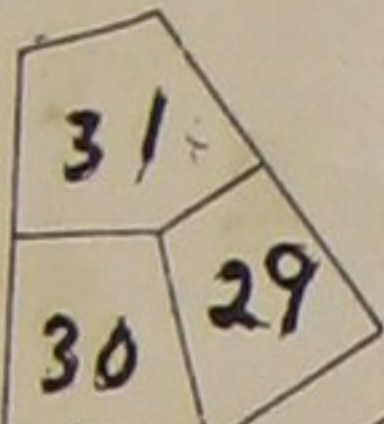
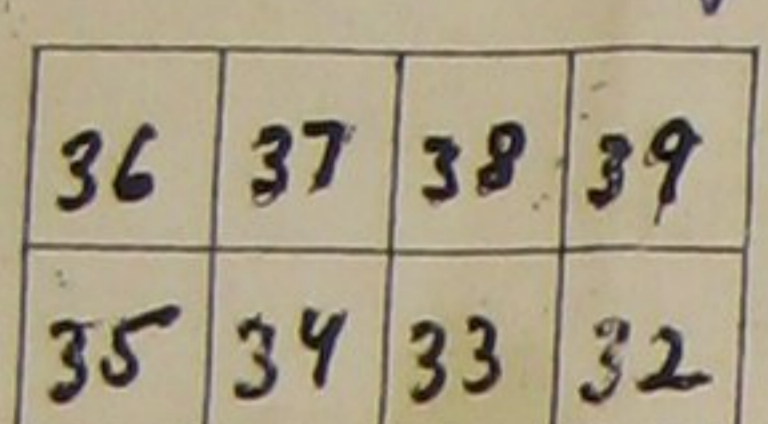
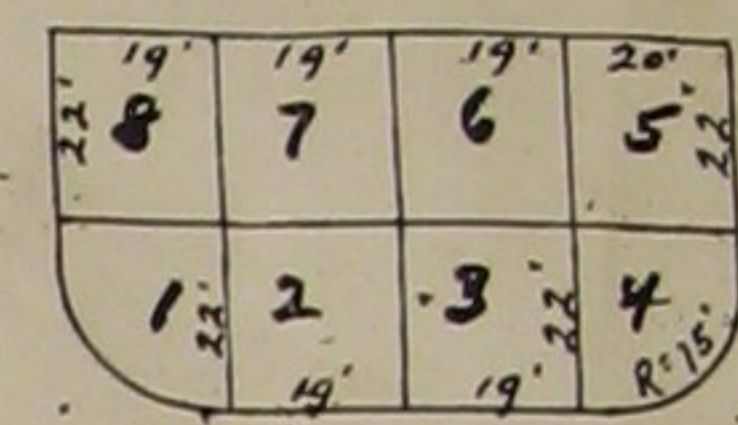
No 5



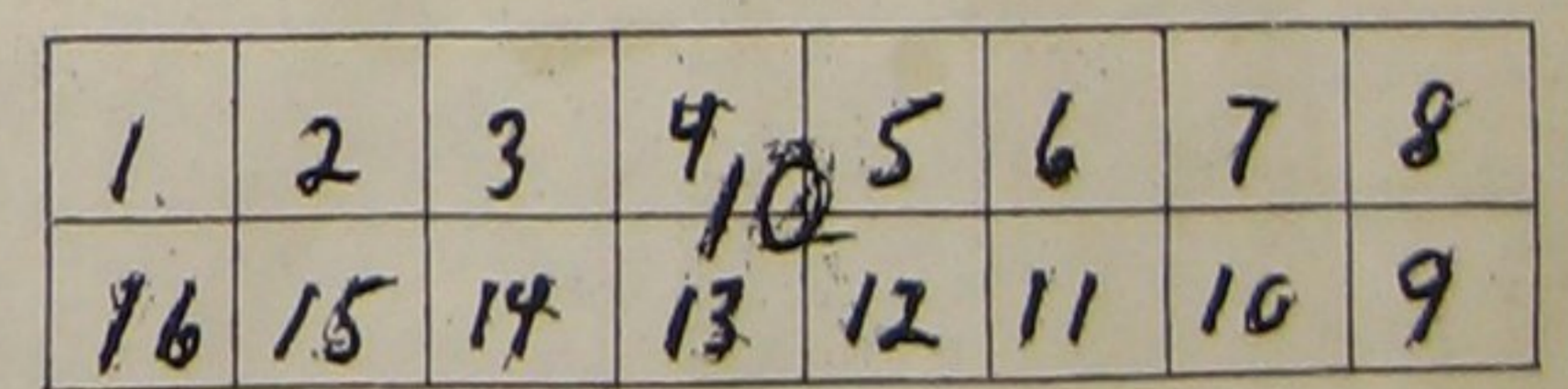
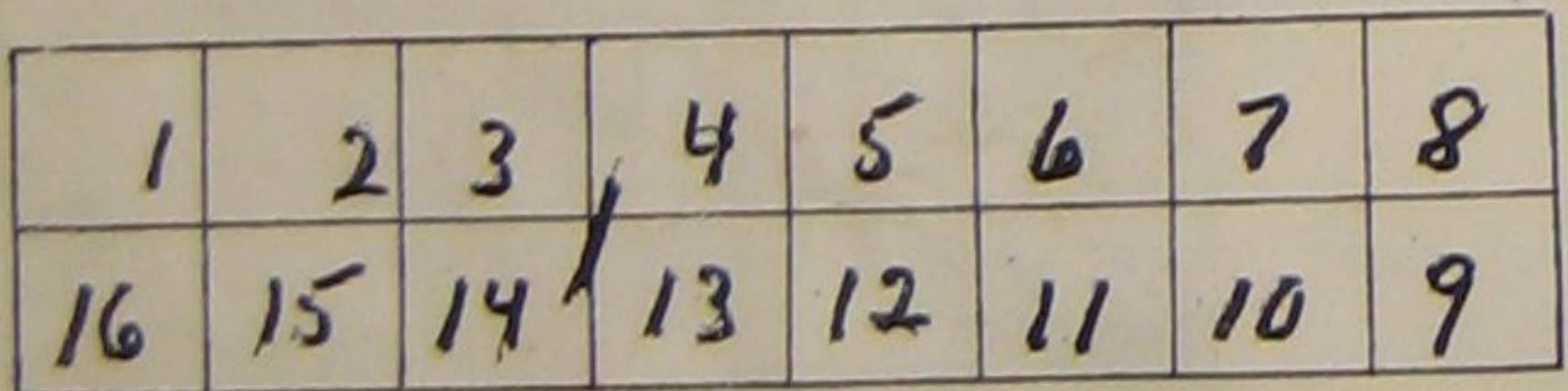
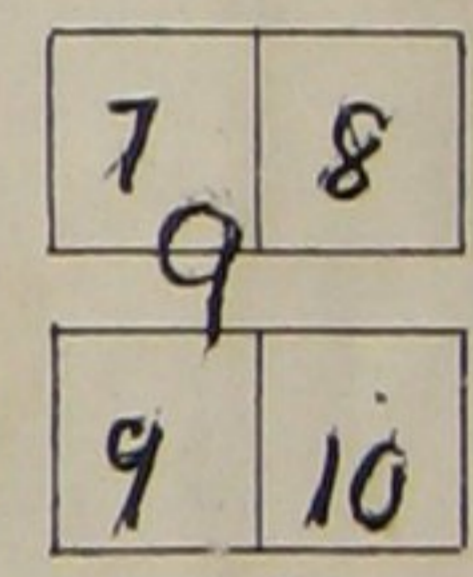
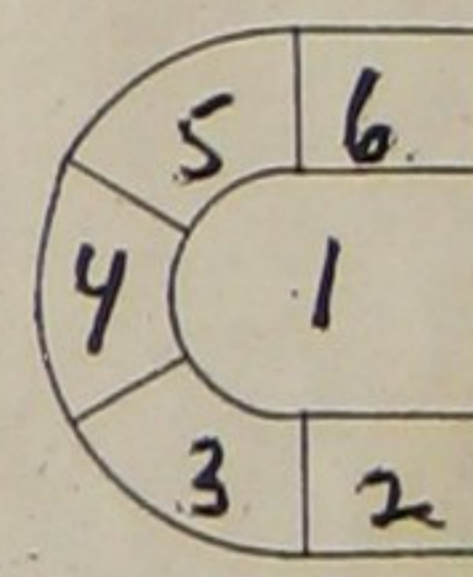
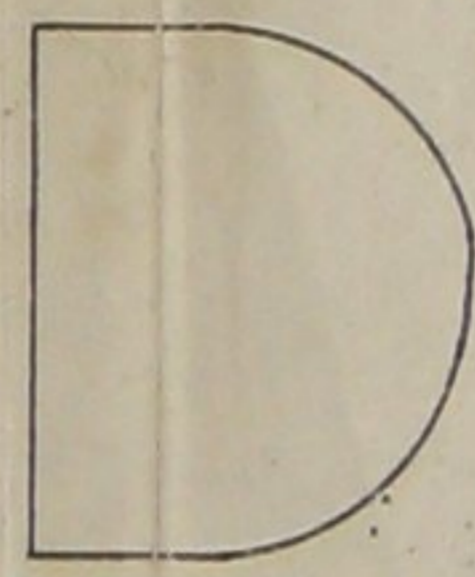
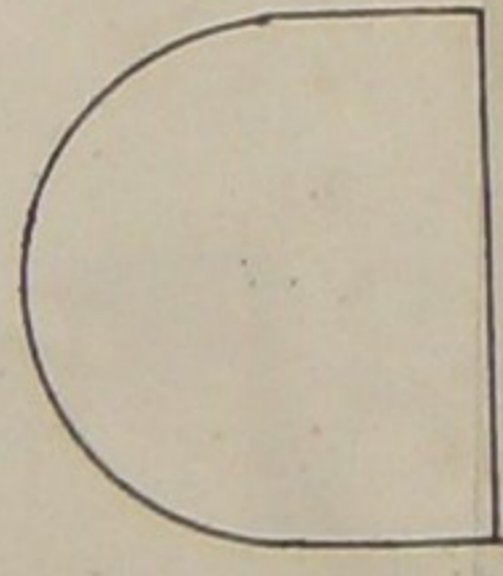
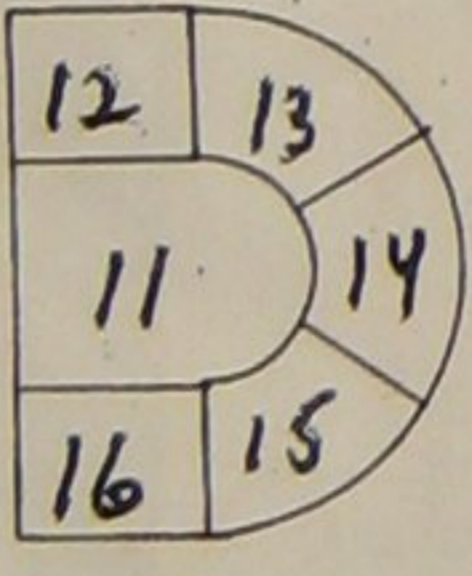
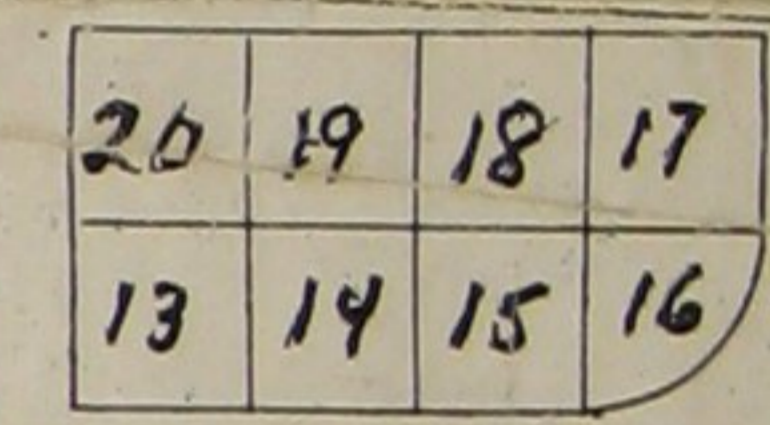
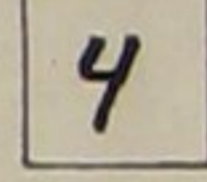
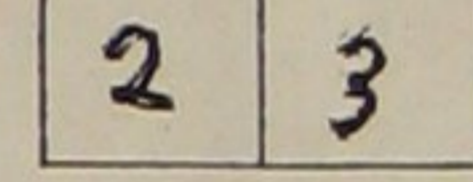
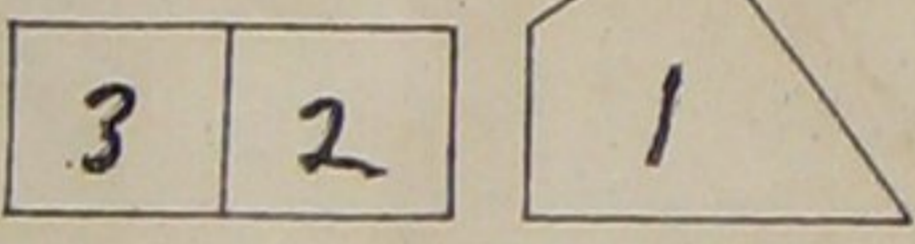
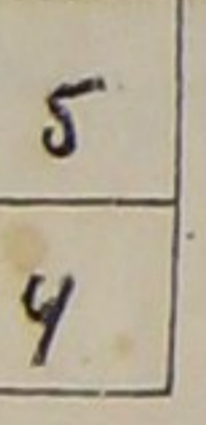
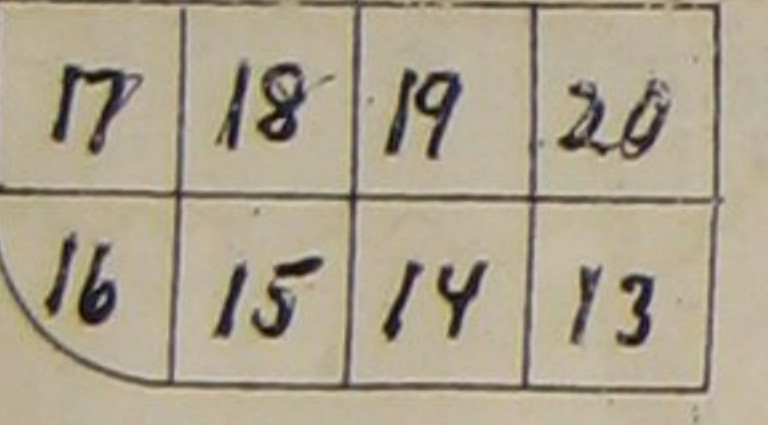
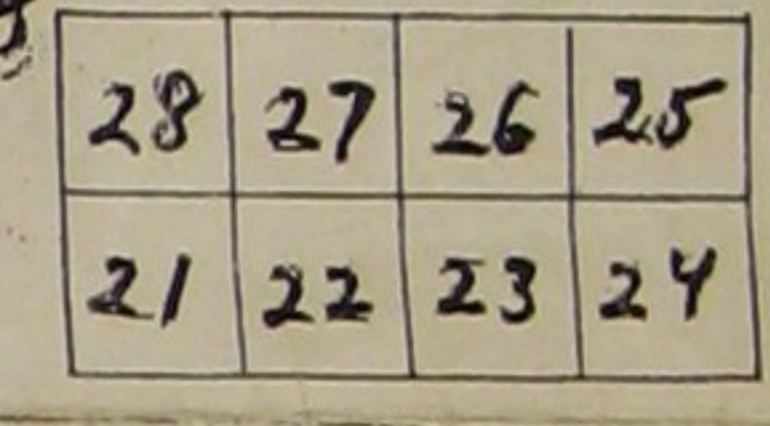
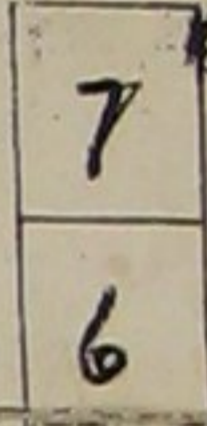
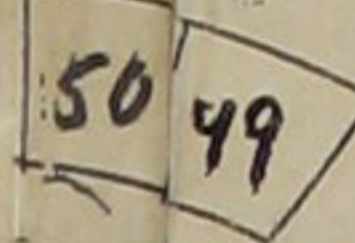
No



No 6



53



Fence

Entrance

HIGHWAY - To Preble.

MAP
SHOWING ADDITION TO
PREBLE RURAL CEMETERY
CORTLAND CO. NEW YORK.
SCALE 1"=40'

Survey and map by *Lewis Mitchell*
Civil Engineer
Syracuse, N. Y.
July 6, 1925